

Geneglance Pack 31

Specifications

Brand	Geneglance
Type	Pack 31
Capacity	5,5 ton per 24hours *
Refrigerant	Freon
Sizes	2070x1410x1500 mm (LxWxH)
Remarks	*5,5 ton 24h thin ice // 5 ton 24h thick ice
Stock	1



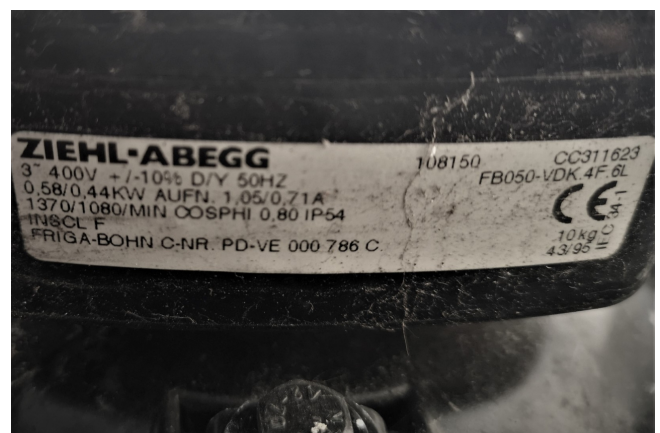
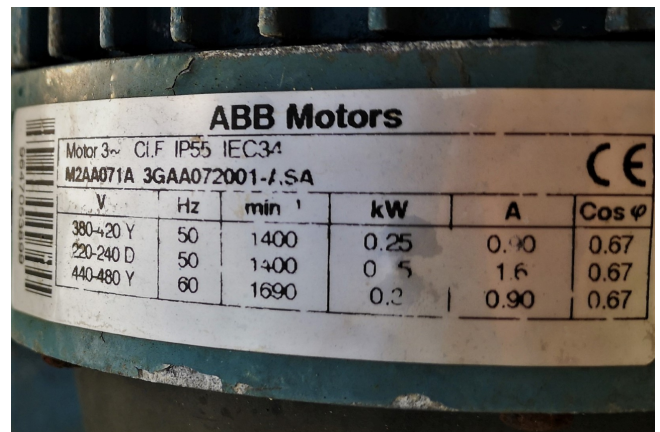
Description

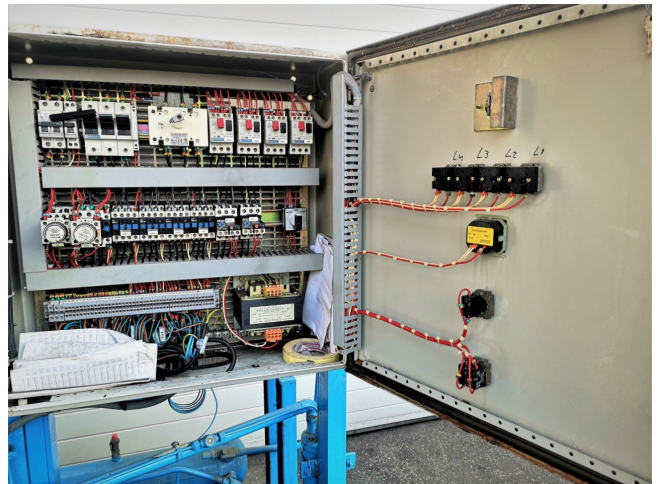
Used Geneglance Pack 31

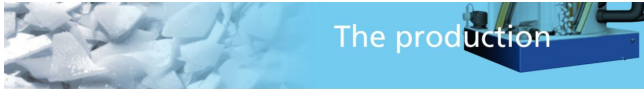
Complete Geneglance flake ice installation equipped with a Maneurop MT 290 HUU hermetic piston compressor, ABB electromotor type M2AA071A, liquid receiver and a Frigabohn condensor with 3 Ziehl-Abegg fans. Attached on a steel frame base.

*Why choose for HOSBV? Were not only the largest used refrigeration specialist in Europe, but also, we deliver all equipment including an extensive test, warranty and deliver after an industrial cleaning. *If requested we are happy to arrange your logistics.









Generators with condensing units

Land-base - fresh water



DUAL PACK 14



PACK 40



MODEL	PRODUCTION KG /24H	
	THICK ICE	THIN ICE
DUAL-PACK 11	350	400
DUAL-PACK 12	450	500
DUAL-PACK 13	650	700
DUAL-PACK 14	950	1 000
PACK 20	1 600	2 000
PACK 21	2 000	2 300
PACK 22	2 500	2 800
PACK 23	3 000	3 100
PACK 30	3 500	3 800
PACK 31	5 000	5 500
PACK 32	6 300	6 400
PACK 33	7 500	8 000
PACK 34	9 000	9 400
PACK 35	10 000	10 700
PACK 36	12 000	13 000
PACK 37	15 000	16 500
PACK 38	18 000	18 800
PACK 39	24 000	26 000
PACK 40	26 000	27 500

Nominal performance with 15°C water and 20°C air
* Wooden pallette for Full Container Load (FCL) shipping.